



**User Manual
for IR-2-USB
(Windows)**

Foreword.....	3
Driver Installation	3
Win98 / WinME.....	3
Win2000 / WinXP.....	4
Girder	5
Install Girder	5
Configure IR-2-USB into Girder	5
Troubleshooting	6
Girder in the learning mode	7
Single commands	8
Multigroup commands	9
Plugins.....	10
Import.....	10
Export.....	10
Miriam.....	11
Install Miriam.....	11
Troubleshooting	11
Miriam in the learning mode.....	11
Single function	11
Multi function	12
Profiles in Miriam	13
Plugins.....	14
Import.....	14
Export.....	14

Foreword

IR-2-usb works with the USB-interface of your PC. It is connected to the USB-port with a standard USB A/B cable. A small USB driver must be installed (available for download on www.ir2pc.com). After the installation of an infrared program on the PC with Windows 95, 98, NT4, 2000, XP operating systems can be controlled with an infrared remote control.

Using a standard remote control like the one that came with your video recorder, TV, HiFi etc you can control many of your PC's functions. You can emulate any mouse or keyboard operations including Ctrl and Shift key presses, start and close applications or send emails at the touch of a button on your remote control. Examples for applications are:

- Multimedia Presentations (eg. Powerpoint).
- Remote Control of TV or radio cards.
- Read and scroll through large documents.
- Simple operation of multimedia programs like MP3 Players, video Players or DVD players.
- and much more....

The module has its own microcontroller, which is responsible for the decoding of the IR-signals thus no CPU load develops.

Driver Installation

Win98 / WinME

- First download the USB drivers and save it on a disk, before you begin with the installation!
- Connect the module using an A/B cable to the USB-port of your PC.
- The hardware recognition starts automatically (if not, please go to control panel and click on "Hardware"). The installation routine starts now, where you are asked for the driver.
- Please select "Searching for the best Driver" and as drive "floppy drive".
- Windows offers the Win98-driver. Confirm the selection.
- Your PC now discovers a further serial interface in the device manager under the USB bus

Note the COM port-NUMBER; you still need the "address" in order to configure the infrared software correctly!

Win2000 / WinXP

- First download the USB drivers and save it on a disk, before you begin the installation!
- Connect the module using an A/B cable to the USB-port of your PC.
- The hardware recognition starts automatically (if not, please go to control panel and click on "Hardware"). The installation routine starts now, where you are asked for the driver.
- Please select "Searching for the best Driver" and as drive "floppy drive".
- Windows offers the Win2000-driver. Confirm the selection. (You get an warning message from Windows XP now. The structures of W2K and Win XP are almost identical, this error message can be ignored.)
- Your PC now detects a further serial interface in the device manager under the USB bus.

Note the COM port-NUMBER; you still need the "address" in order to configure the infrared software correctly!

Girder

The Girder - software is needed, to convert the button presses on your remote control into keystrokes in your programs. Thereby Girder has provided defined characteristics (i.e. Notepad call up).

Install Girder

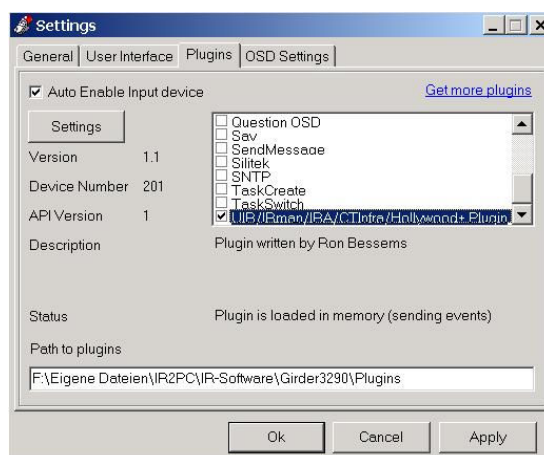
The .zip-file can be opened with Winzip or WinRAR. Unzip the file in a new file. (In the case that this directory does not exist it will be created automatically). You have Girder.EXE then. Click on it; it follows the familiar installation mask of Windows then.

The module itself is not needed for the installation in the USB-Port stick.

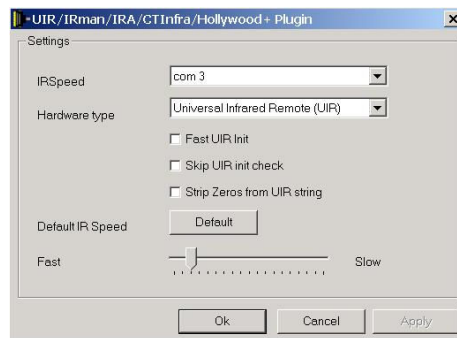
Configure IR-2-USB into Girder

This step is needed for the correct code transfer. Girder needs to know from where the infrared codes come.

- start Girder
- Choose the submenu "file /Settings/"ground"" and click on <This profile automatically load>
- For the path - statement you go on <Look for>
- In Girder - list you see several files. Choose one *.Gir - File
- Click on "hardware - Plugins" and look to the right on top in the list <UIR /IRman>



- If you selected <UIR/IRman> and apply this setting; changes the Button "Settings".



- Check the COM-port number and select the correct one if necessary.
- Select "Universal Infrared Remote" (if it is not selected).
- enable "Skip UIR init check"
- apply these settings and close this menu.
- If you want, click <Equipment automatically tune in>.
- Click now on <Apply>

You can open the device with <F9>. You will see a message "Girder enabled" and a green point in the bottom right corner in the Window of Girder. Now you can work with this configuration.

Troubleshooting

If you have trouble with the configuration and the IR-2-USB-receiver is not enabled and codes are not received:

Unplug the receiver and wait a few seconds. Disable the IR device with <F9>. Girder itself need not be restarted. Connect your receiver module again, wait until the driver is installed and press <F9> to enable device again. It should work now.

If the receiver works but you have different codes output:

Select <UIR/IRman> in the setting and open "Settings" to edit the COM-port-settings. Now push the sliding control (for speed) more to the left or right. Now the codes should be received more stably.

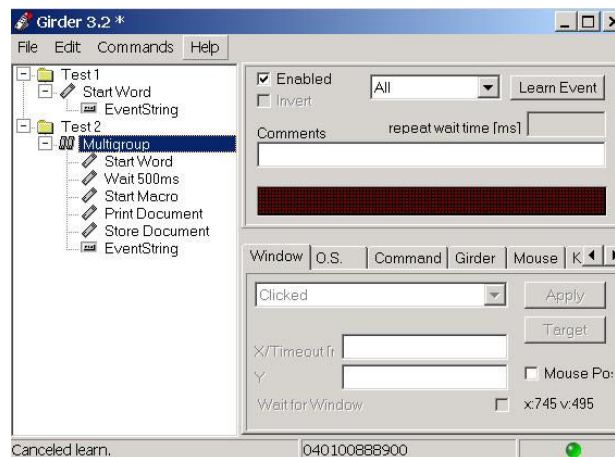
Girder in the learning mode

Girder has a lot of features and windows which need a few descriptions. You can load, edit and save your personal profiles. You can lock you specified profile if you need.



You can open Toplevelgroups and Groups which are implemented in them. You can choose every name – but note that you need clear names if you want to control more than one program via remote. Every command will be saved in the Groups.

Girder offers two different kinds of command: First is: The simple command which has always one deposited code. The second way: To control more complex programs is the Multigroup-function - one deposited code starts a lot of commands automatically.

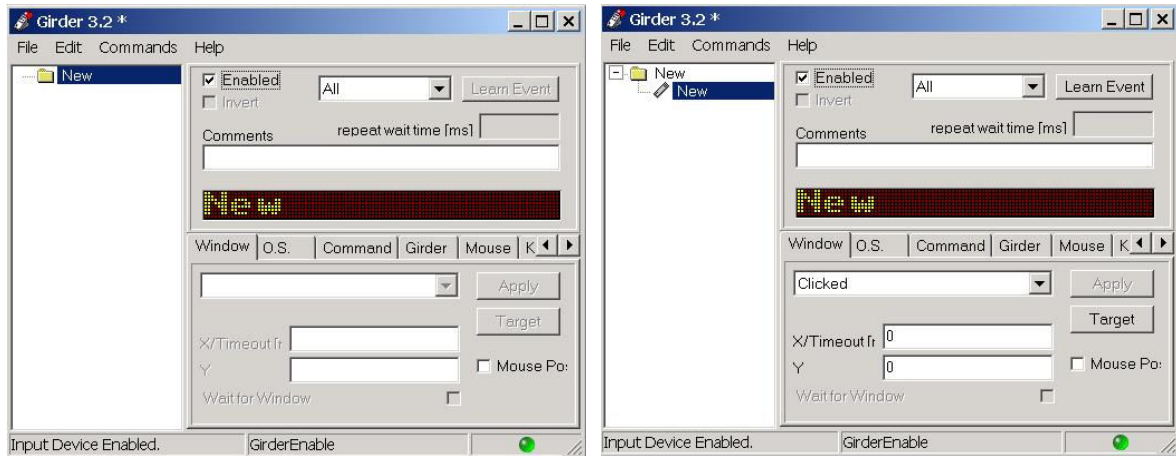


In the folder “Test 1” is one event and an event string deposited. If you press on the right button on your remote Word will be started automatically.

In the folder “Test 2” are 5 events and only one event string deposited. If you press on the right button on your remote, Word will be started with an active macro, the printer will print the document and the generated document will be saved automatically.

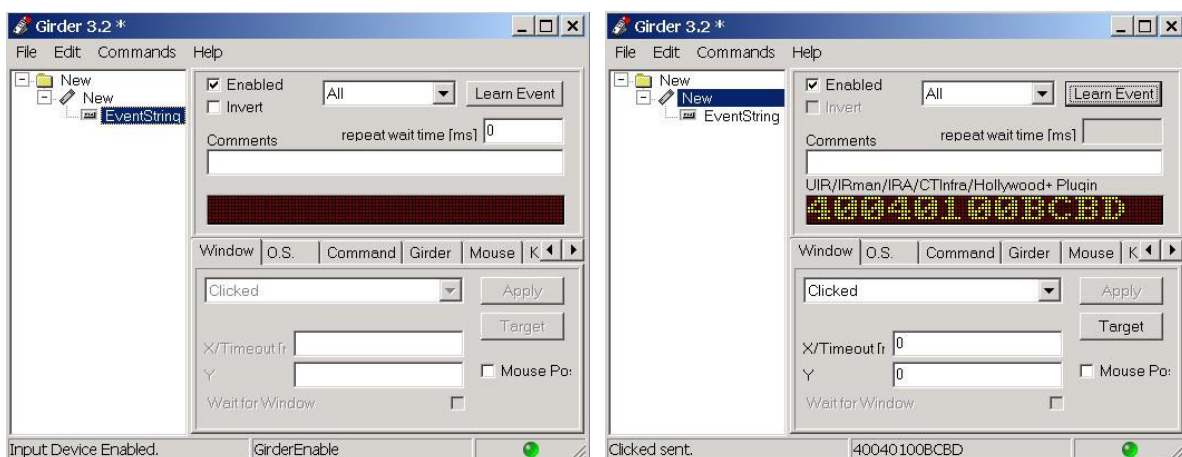
Start Girder (if not started) and press <F9> for starting the infrared receiver module. Add a Toplevelgroup and a command.

Single commands



Now select what Girder should do if the key of the remote control is pressed. If you want a feature on your screen, then take a look in the drop down menu of “Window”. If you want to request a feature of Windows (e.g. Windows shutdown, Monitor power on or off), you will find the commands in “O.S.” – sector. If you want special behaviour of Girder, select “Girder” – you will find all defined features there for an easy remote control. If you want to imitate mouse or keyboard then go to sector “Mouse” or “Keyboard”.

If you have edited your favourite feature, then you have to add the remote control key which should start this. Click on the key-icon in the list and then on the button “Learn Event” in the right area. It will be added an “Event String”-icon to the command list.



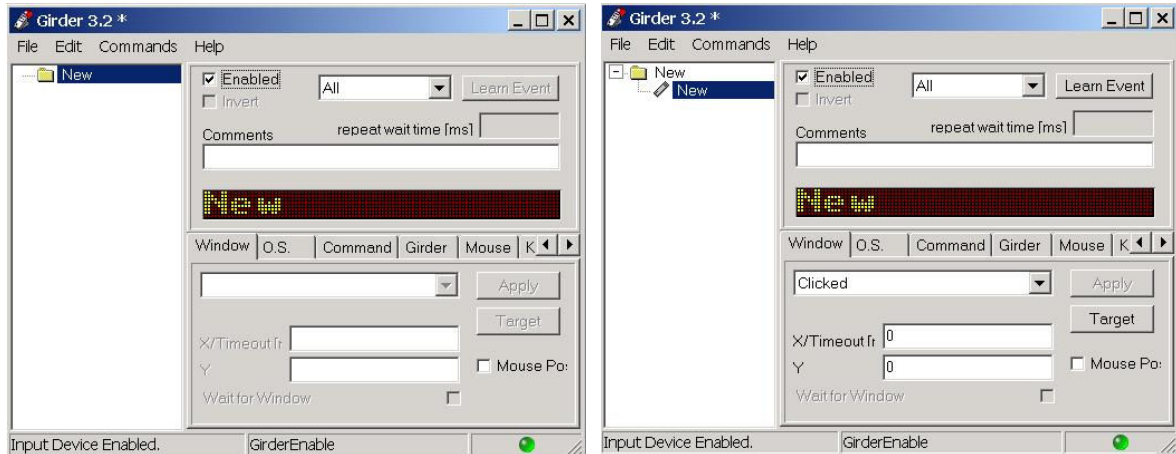
Press now the preferred key on your remote control. It should be a new code in the black area.

If you want test your commands, press <F5> - the command will be executed (or not if there are any faults).

If you want more commands implemented onto your computer, then repeat the steps again.

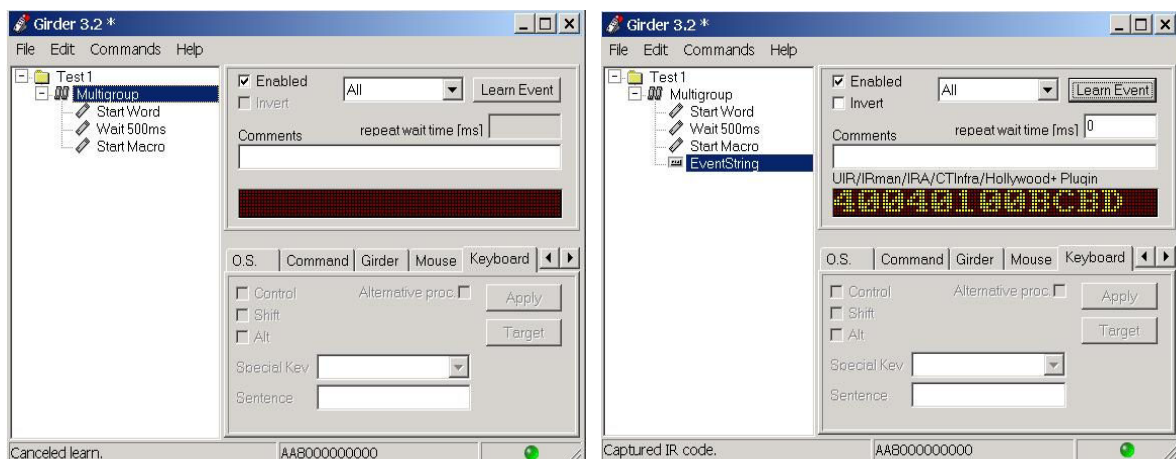
If you are finish with Girder configuration, you have to save it – otherwise it will be lost and it is not available at a restart of Girder. The saved file will be shown with the well known remote-icon on your desktop.

Multigroup commands



Now select what Girder should to do if the key of the remote control is pressed. You can combine all remote features with themselves so you have an expiration plan which goes if only one key of your remote is pressed.

Open a new group (if requested) and add a “Multigroup” into it. Then generate and edit the requested commands. Very important: To ensure for a correct schedule, please add between every step a small pause (option “wait” in the drop down menu of “Window” and set the timer “X-timeout” to 500 (ms).)



If you are finished with editing, please select the “Multigroup” and press on the button “Learn Event” in the right area. An “Event String”-icon will be added to the command list. Press a button on your remote control and the received code will be shown in the black area. You do not need an event string for every command.

If you want test your commands, press <F5> - the command will be executed (or not if there are any faults).

If you want more commands implemented onto your computer, then repeat the steps above.

If you have finished the Girder configuration you have to save it – otherwise it will be lost and it is not available at a restart of Girder. The saved file will be shown with the well known remote-icon on your desktop.

Plugins

Plugins are complete files for controlling different programs. They can be downloaded and installed via the “Import Group”.

Import

Please download your Plugin-file and extract it into a folder. Then go to “File ->Import Group” and go to the folder where the plugin stays. You need a *.GML-file – it has almost a remote – icon as girder itself. The click on “open” and the plugin is added to Girder. Now new entries are available in the command list.

Your PC has to learn only the key presses of your remote – so you have to generate only an “Event String” for every command and to save the edited file.

Export

You can also create a plugin. You need only to use the “File ->Export Group” – function. You will be asked where Girder should save the generated *.GML-file.

Miriam

The Miriam - software is needed to convert the entries on your remote control in your programs. This software is appropriate for users who want a simple and easy-to-use tool to add and edit commands easily.

Install Miriam

Please remove the USB-receiver from your PC. Install “miriam_irman.exe” in your preferred folder and start Miriam. Miriam answers “Error while opening COM-port. Please check your settings”. Connect the receiver with your PC now, wait a moment for installing the driver and take a short look in your device manager on which COM-port a virtual COM-port is generated. Confirm the error message and go on the question mark in your task menu and open “Receiver Setup”. Please edit and confirm this setting. If the COM-port is correct, please confirm it again (otherwise it will be buggy after restarts). The question mark changes to a remote control which blinks red if a key is pressed.

Troubleshooting

If the remote control changes into a question mark, and the receiver does not work:

Close Miriam first and unplug the receiver second (not reversed – you will get an endless software string!). Wait a few seconds and connect the receiver and start Miriam as in chapter “Install Miriam” described.

If the receiver works, but you have different codes output:

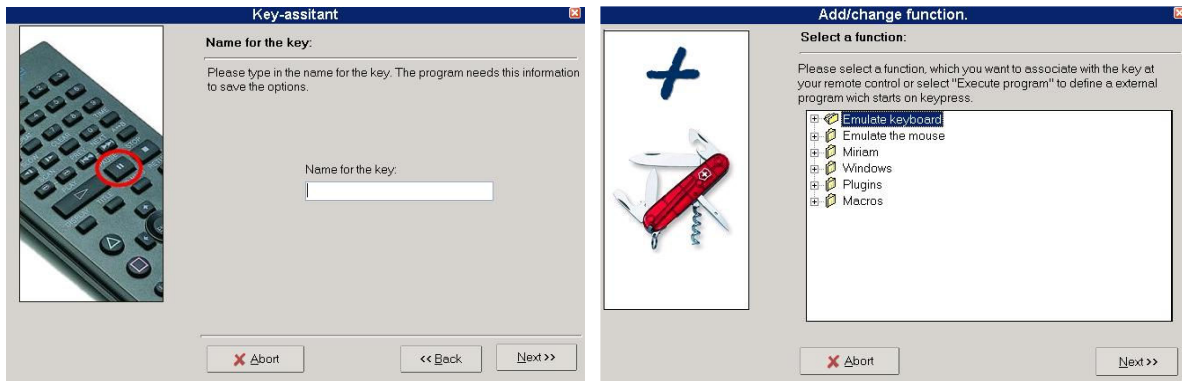
Please open “setup” and insert a different value in the “Signalrepeating speed”. Now the codes should be received more stably.

Miriam in the learning mode

Miriam offers two kinds of commands. First is named “Single Function” and used for one command per key press. The second is named “Multi Function” and can be used to execute a list of commands by pressing one key.

Single function

If you click on the remote in your task bar the Miriam offers a lot of features. If you press “Learn a new key”, Miriam opens a window – click on “Next”. You have to give a name for the key and confirm it by clicking on “Next”. Please select “Single function” in the next window and you will be forwarded to the command list.



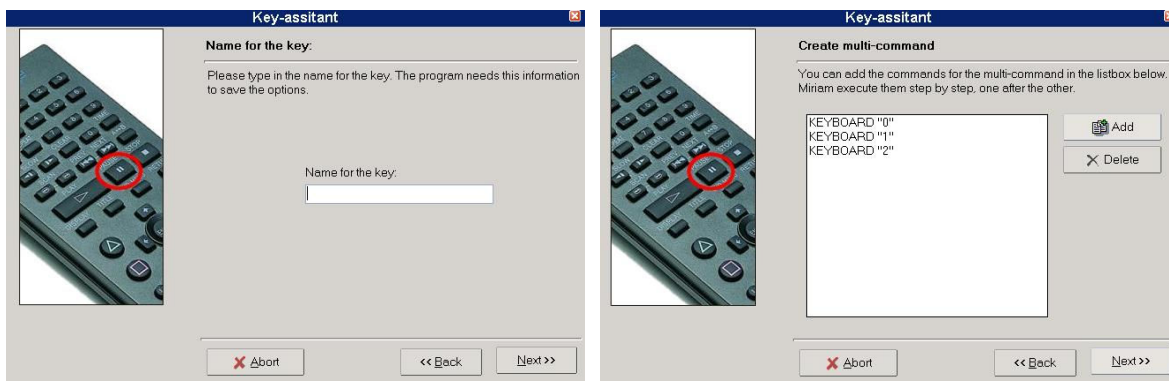
You have to select your preferred command now. If you have selected your command, click on “Next” again. You will be forwarded to the next window which asks you for the key. Press on the preferred key on your remote until you see a confirmation “The key is now associated with the selected function! Press OK to close”.



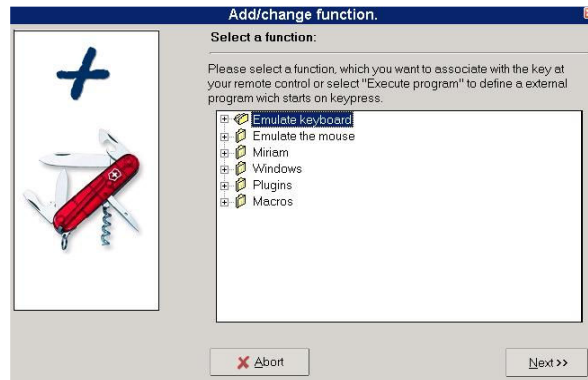
The commands and keys are saved in DATA.dat which you can find in the Miriam-folder.

Multi function

If you click on the remote in your task bar, Miriam offers a lot of features. If you press “Learn a new key”, Miriam opens a window – click on “Next”. You have to give a name for the key and confirm it by clicking on “Next”. Please select “Multi function” in the next window and you will be forwarded to an overview on which you can add and delete functions.

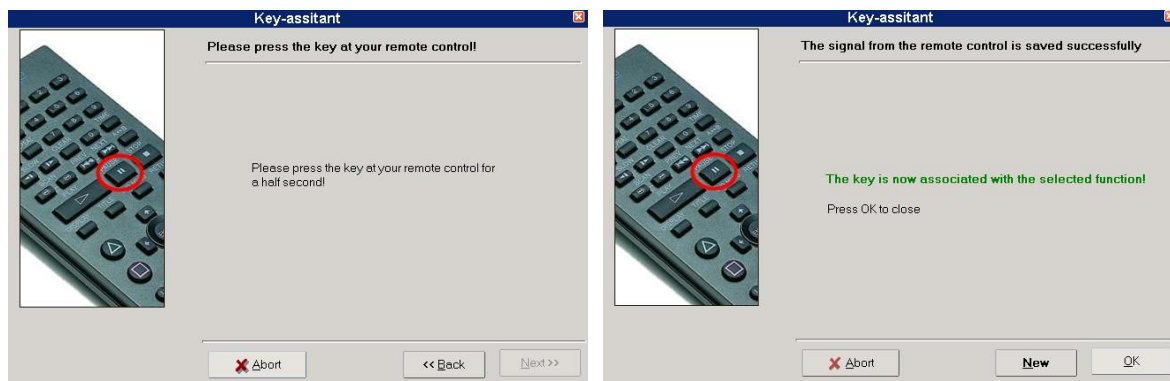


To add a command, click on “Add” and you will be forwarded to the command list where you can select your preferred key. If you have selected your command, click on “Next” again. You will be forwarded back to the function list.



To delete a command, then you will have to mark this command in the command list and click on “Delete”. If you have selected your command click on “Next” again.

You will be forwarded to the next window which asks you for the key. Press on the preferred key on your remote until you see a confirmation “The key is now associated with the selected function! Press OK to close”.

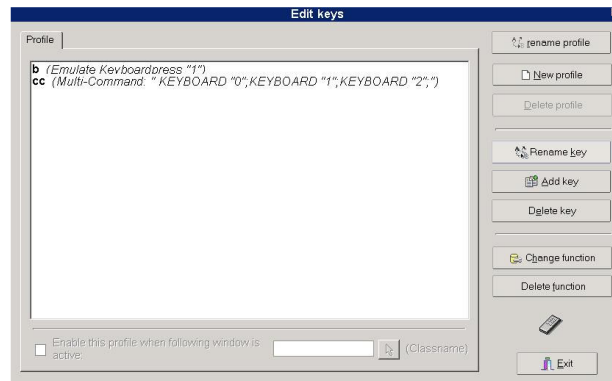


The commands and keys are saved in DATA.dat which you can find in the Miriam-folder.

Profiles in Miriam

Miriam offers a special feature: You can enable or disable some profiles by connecting Miriam with programs. So you connect Miriam with Word and execute Macros via “1” on your remote key (if Word is open) or starting “play” if Winamp is active.

You can add, delete, enable or disable profiles. You can enable or disable profiles by starting programs. One profile “Profile” is always activated. You can connect this profile with executables programs by clicking on “Enable this profile if following window is active”. You have to click on the button “Classname” then and open the preferred program. Now go with your mouse pointer to the open program window and click “<Cntrl> <9>” on your keyboard. The setting is saved now in Miriam.



If you add a new profile the new profile has all available commands. Click “Add Key” to add a command to the new profile or “Delete Key” for deleting over the routine. You can also edit functions and keys.

All names of profiles and keys (strings) can be changed as required. Mark up the command what you want to rename and enter the new name.

If you want exchange the remote keys, you should delete the old string and add a new one with the preferred command(s).

Plugins

Plugins are complete files for controlling different programs. They can be downloaded and installed via *.ini-files.

Import

Please download your Plugin-file and extract it into the LIB-folder of Miriam. The command of the Plugin will be added to the command list – it has an own header so you can see and use it easily.

Export

The export of a Miriam – Plugin is really easy: You only need to copy the *.ini-file from the Miriam-LIB-folder.



Copyright 2000-2005 IR2PC.com. ("IR2PC"). All rights reserved.

The IR2PC name and logo, and all related product and service names, design marks and slogans are the trademarks of IR2PC. All other product and service marks contained herein are the trademarks of their respective owners. You may not use any IR2PC or third party trademarks or logos without the prior written consent of IR2PC or the applicable trademark owner.